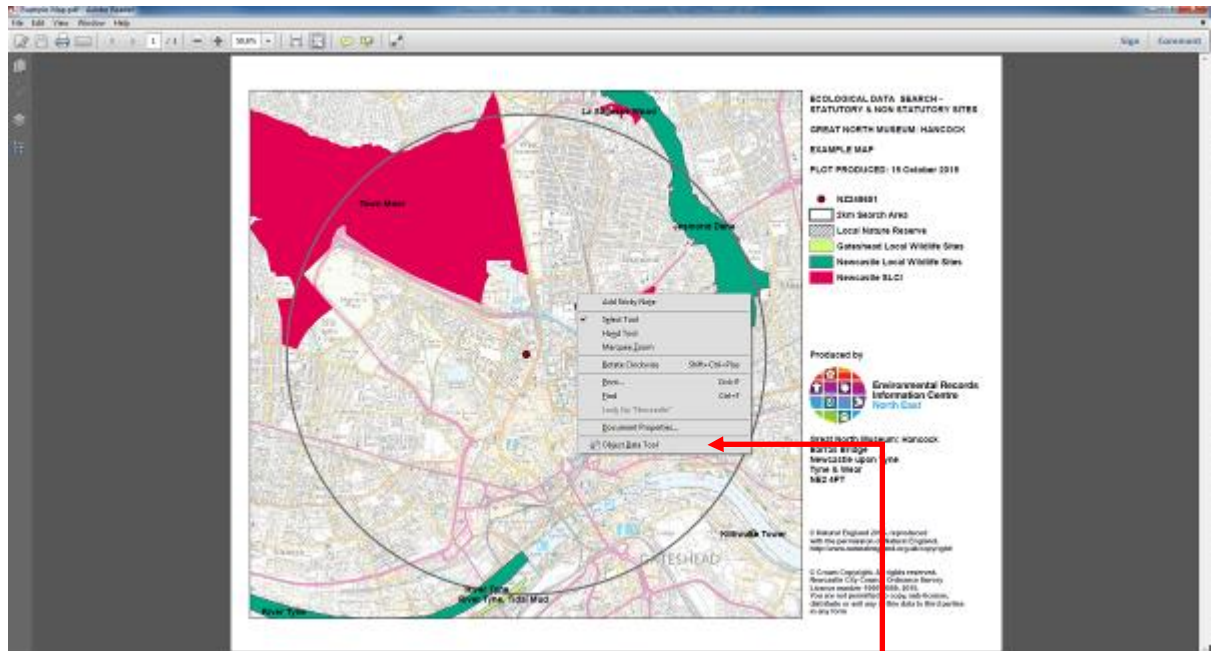




## Environmental Records Information Centre North East

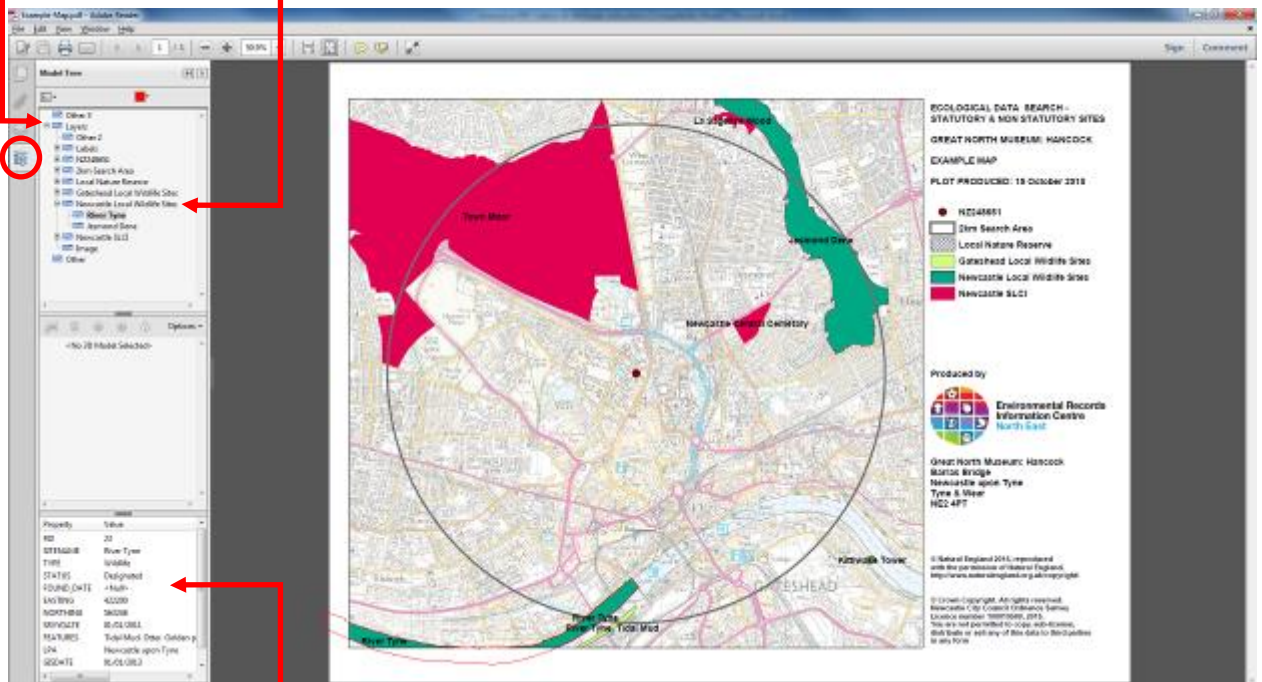
### Interactive PDF Citation instructions

- You will need Adobe Reader X – it is a free download if you do not currently have that version
- Hold your pointer over the map and right click for the options menu



- Click on the option at the bottom of the menu called 'Object Data Tool'
- Click on any site on the map and a 'Model Tree' side menu will open with a list of items and expanding boxes

- Select the + expanding list for 'Layers'
- Select the + expanding list for the LWS Citations you would like to view



- All citation information will be shown in a small box at the bottom of the screen for each site you select
- You can also use the Layers tool to show or hide layers. This can be very useful when there are a lot of close and/or overlapping sites

